

Anti-RecA antibody, rabbit polyclonal

61-003 50 μ g, 61-004 250 μ g

***E. coli* RecA protein** (352 aa, 38 kDa) plays critically important roles in homologous recombination, recombination repair and regulation of cellular responses to DNA damage (SOS response). **RecA** promotes auto-cleavage of LexA repressor by its coprotease activity after DNA damage, and induces many proteins related to DNA repair including **RecA** itself (1).

Applications

1. Western blotting (1/3,000 dilution)
2. Immunoprecipitation (1/600 dilution)
3. Indirect immuno-fluorescent staining (assay dependent)
4. ELISA (assay dependent)

Immunogen: Highly purified full-length recombinant *E. coli* RecA protein

Purity: The anti-serum was first adsorbed with extract of *recA* deletion strain and affinity-purified with purified RecA protein conjugated with agarose beads.

Form: Antibody solution at 1.0 mg/ml in PBS with 50% glycerol, filter-sterilized

Storage: Shipped at 4°C or -20°C, and upon arrival, aliquot and store at -20°C or below.

Data Link UniProtKB/Swiss-Prot [P0A7G6](#) (RECA_ECOLI)

Reference: Friedberg EC *et al.* DNA Repair and Mutagenesis 2nd Ed. ASM Press

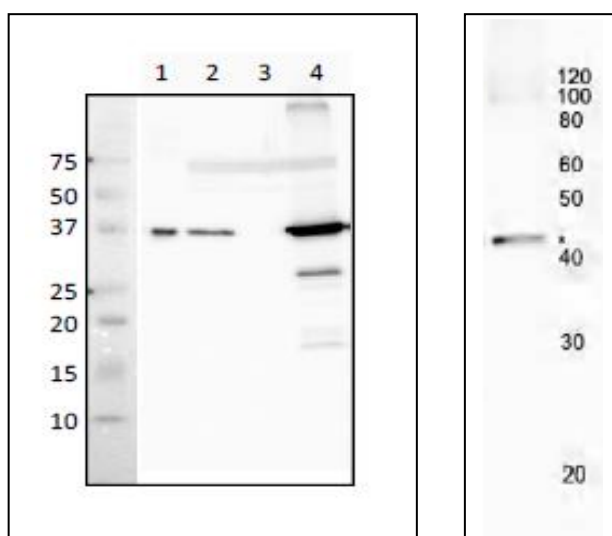


Fig 1. Western blot analysis of RecA protein in crude extract of *E. coli*.

Lane 1, Purified RecA 8 ng. Lane 2, Wild type. Lane 3, Δ *recA* mutant. Lane 4, Δ *lexA* mutant (SOS genes overexpressed). Antibody used at 1/3,000 dilution. Cell extracts, 2 μ g

Fig 2. Immunoprecipitation of RecA protein from crude extract of *E. coli* cells.

Antibody 2 μ g was adsorbed to proteinA magnetic beads to precipitate RecA protein from supernatant of sonic disrupted *E. coli* cells. The precipitate was analyzed by western blot.

Related product: # 01-001 *E. coli* RecA protein, functional.